

Brilliant

Design Zafferano

Brilliant è una collezione di lampade caratterizzata da lunghi e sottili diffusori cilindrici in policarbonato, che sono lampadine con attacco a baionetta, facilmente sostituibili. La gamma comprende: versioni da parete con una o due lampadine, in due dimensioni; e versione da terra con sei lampadine.

Tutti i modelli sono dimmerabili con tecnologia TRIAC. È possibile selezionare la temperatura di colore a 2200, 2700 o 3000 K (per la versione da parete al momento dell'installazione).

La struttura in pressofusione di alluminio della versione da terra è disponibile in finiture opache oro, nero e bianco; quella della versione da parete anche in cromo lucido. Brilliant è adatta esclusivamente ad ambienti interni, sia residenziali che contract.

Brilliant is a collection of lamps featuring long, slim cylindrical polycarbonate diffusers, which are bayonet-cap bulbs that can be easily replaced.

The range includes sconces with one or two bulbs, in two sizes; and a floor lamp with six bulbs.

All models are dimmable with TRIAC technology. It is possible to select the color temperature at 2200, 2700, or 3000 K (for the sconce version, at the time of installation).

The die-cast aluminum structure of the floor lamp is available in matte gold, black, and white finishes; the sconce version also comes in polished chrome.

Brilliant is intended exclusively for indoor use, in both residential and contract settings.

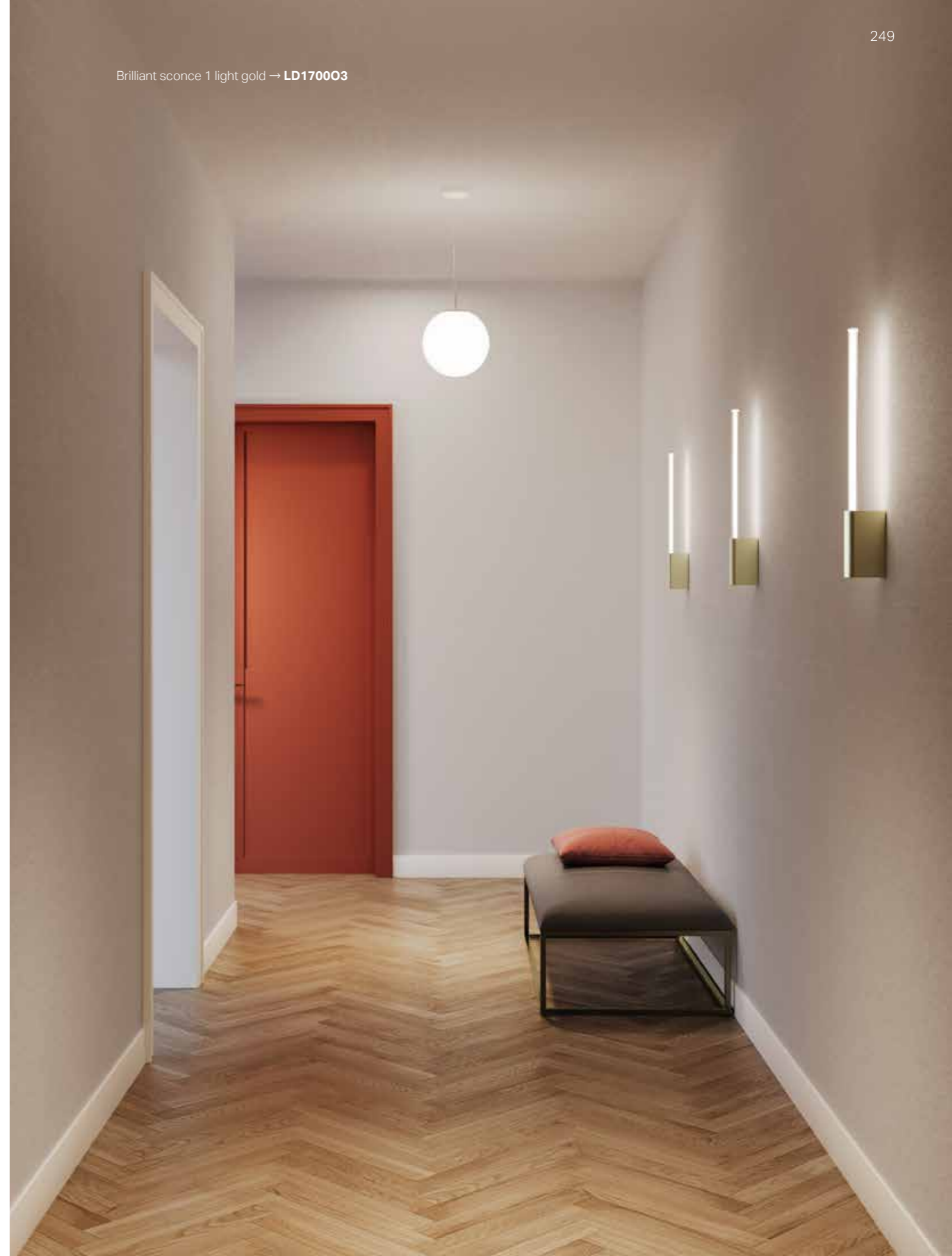
Brilliant wall-ceiling lamp, glossy chrome → LD1703C3





Brilliant sconce 1 light black → **LD1700D3**

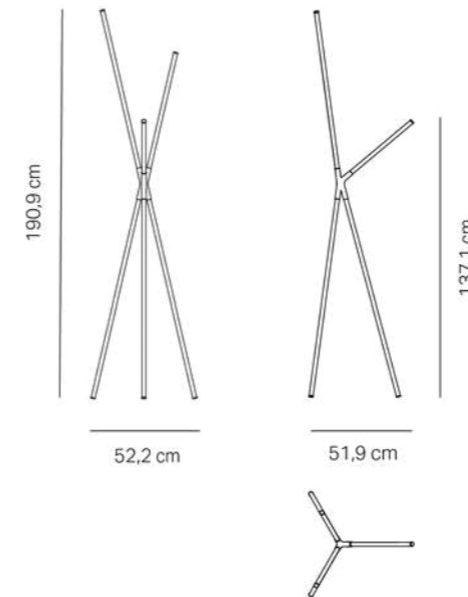
Brilliant sconce 1 light gold → **LD1700O3**



Brilliant

Lampada da terra
Floor lamp

Dati tecnici
Technical data



LED TRIAC

CCT 2200-2700-3000 K | 220-240V | CRI>80
50-60 Hz | 36 W
1x156/162/173-1x259/269/289-1x323/338/360-
3x426/456/462 lm | beam angle 360°

IP20



Diffusore in policarbonato
Polycarbonate diffuser

Corpo in pressofusione di alluminio verniciato
Die-cast painted aluminium body

Adatta all'uso interno (lampada IP20)
Suitable for indoor use (lamp IP20)

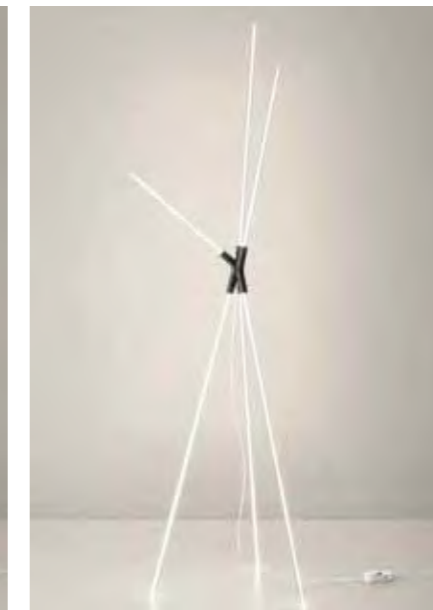
Finiture
Finishes

IP20



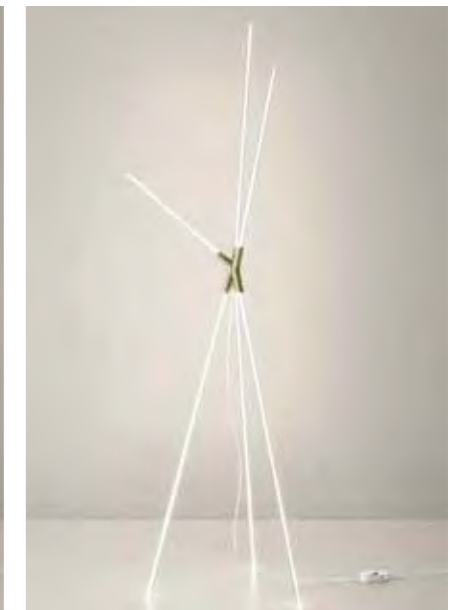
Bianco / *White*

LD1705B3



Nero / *Black*

LD1705D3



Oro / *Gold*

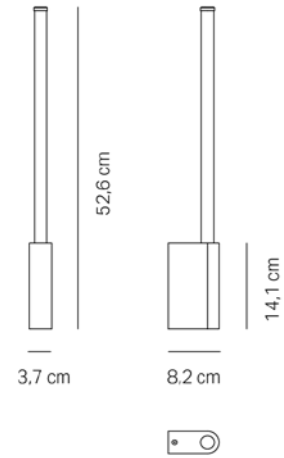
LD1705O3

Brilliant

Lampada da parete 1 luce
Sconce 1 light

Dati tecnici

Technical data



LED TRIAC

CCT 2200-2700-3000 K | 220-240V | CRI>80
50-60 Hz | beam angle 360°

IP20

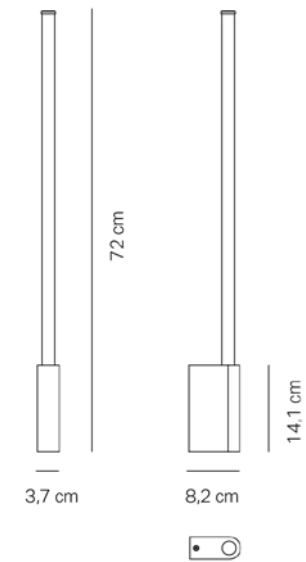


Diffusore in policarbonato
Polycarbonate diffuser

Corpo in pressofusione di alluminio verniciato
Die-cast painted aluminium body

Adatta all'uso interno (lampada IP20)
Suitable for indoor use (lamp IP20)

Disponibile in due misure
Available in two sizes



Finiture Finishes

IP20

Bianco / *White*Nero / *Black*Oro / *Gold*Cromo lucido
Glossy chrome

h 52,6
5 W | 285-300-310 lm

LD1700B3**LD1700D3****LD1700O3****LD1700C3**

h 72
7 W | 473-501-530 lm

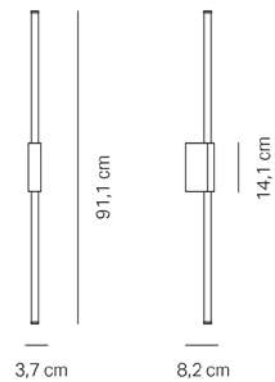
LD1701B3**LD1701D3****LD1701O3****LD1701C3**

Brilliant

Lampada da parete - soffitto
Wall - ceiling lamp

Dati tecnici

Technical data



LED TRIAC

CCT 2200-2700-3000 K | 220-240V | CRI>80
50-60 Hz | beam angle 360°

IP20

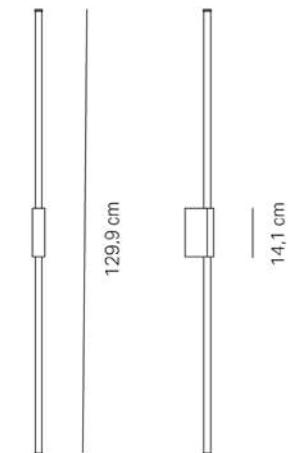


Diffusore in policarbonato
Polycarbonate diffuser

Corpo in pressofusione di alluminio verniciato
Die-cast painted aluminium body

Adatta all'uso interno (lampada IP20)
Suitable for indoor use (lamp IP20)

Disponibile in due misure
Available in two sizes



Finiture

Finishes

IP20



Bianco / White

LD1702B3



Nero / Black

LD1702D3



Oro / Gold

LD1702O3



Cromo lucido
Glossy chrome

LD1702C3

h 91,1
9 W | 2x285-2x300-
2x310 lm

h 129,9
12W | 2x376-2x397-
2x422 lm

LD1703B3

LD1703D3

LD1703O3

LD1703C3